

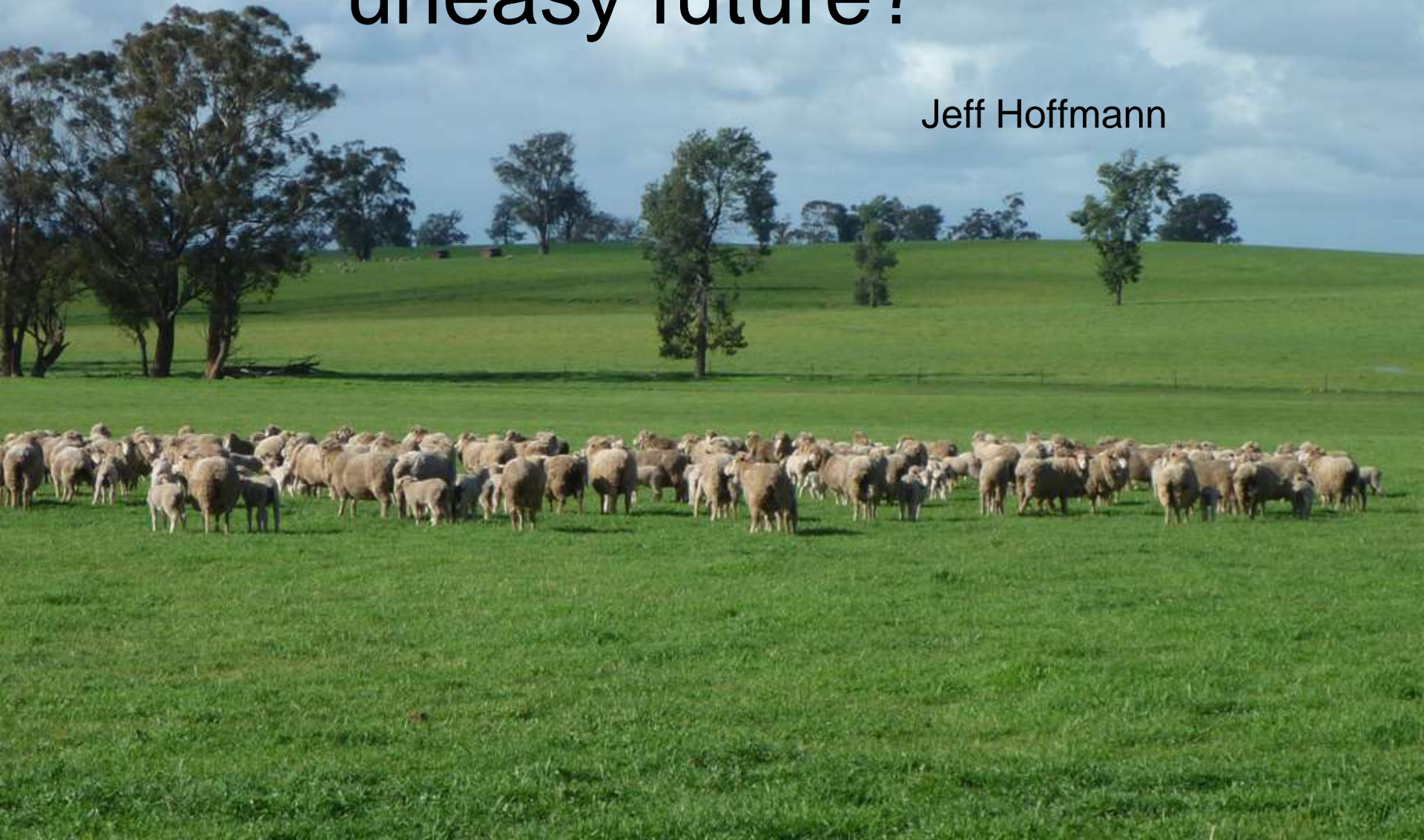
Farming and mining, an uneasy future?

Jeff Hoffmann



Farming and mining, an uneasy future?

Jeff Hoffmann



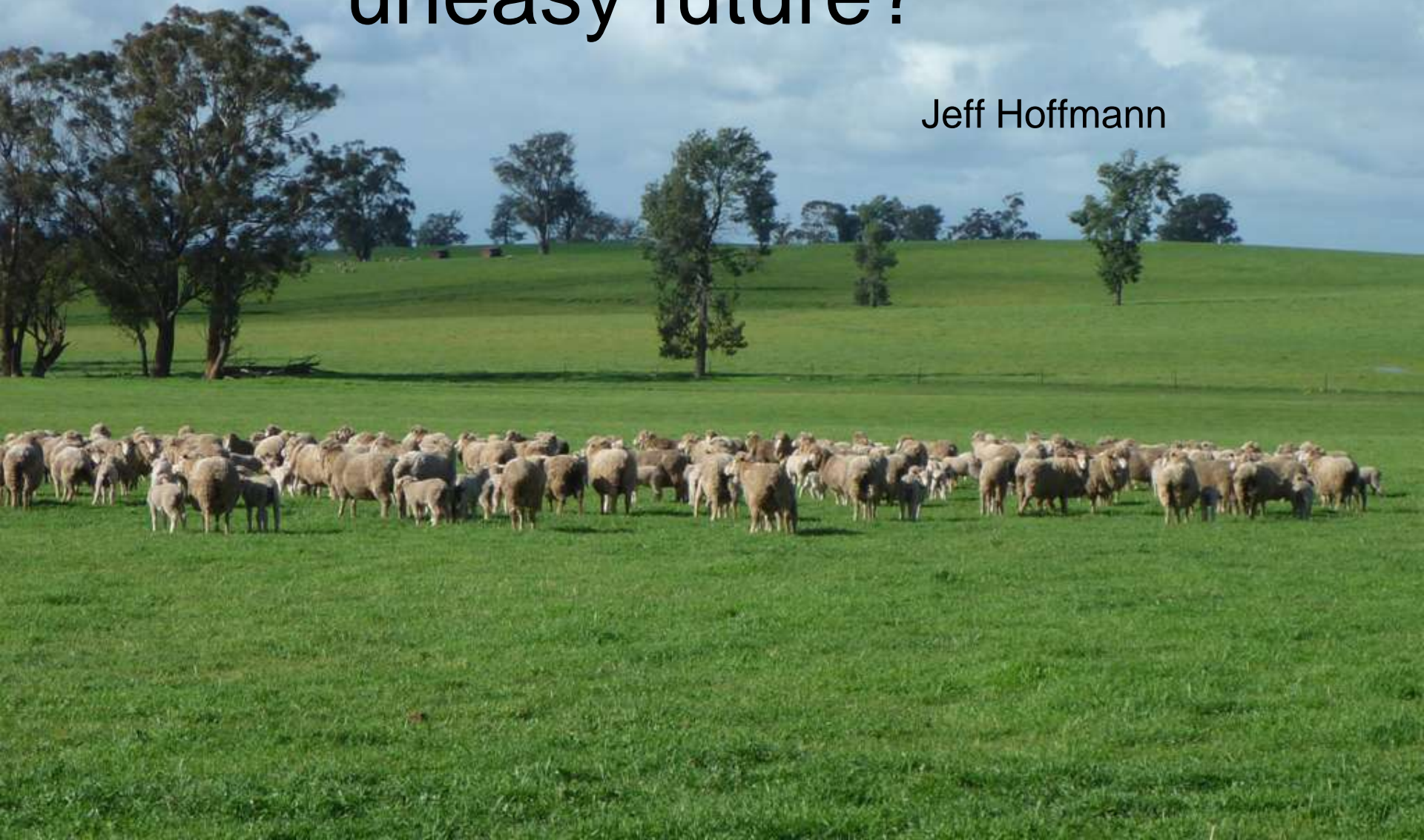
Farming and mining, an uneasy future?

Jeff Hoffmann



Farming and mining, an uneasy future?

Jeff Hoffmann



A Landcare issue?



Lockhart, a farming community

But

Exploration by Standard Iron has found extensive deposits of pisolite iron ore in prior streambeds.

Deposits up to 500 m wide and up to 10 m thick, with 3 m overburden.

Could be 3 million tons per Kilometre

Propose to mine and ship 20 million tons per annum to the seaboard by rail (1/500th of the projected Pilbera extraction in 2020).



Miners have the legal right to explore

The government owns the minerals

Farmers have a right to farm

Miners have a right to mine

Farmers have to be compensated

Miners have to restore the land

The company promises no mining without a “social licence”

The landholders to be compensated

The town gets the jobs, economic development and infrastructure

But

Social disruption

Haves and have nots

Labour shortage and increased labour costs for non mine employers

Fly-in fly-out and mine self sufficient = nothing for the local town.





Club
MOTEL

SWAN
TRAVELLERS INN, ENTRANCE AT REAR
COUNTER REELS - BARRING ROOM
MOTEL UNITS - PARKING - NEW OFFICE

100 YARD

Truck movements

550 loads per day moving from the mine to the rail

(a trucks every 2½ minutes, 24 hours/day 365 days per year)

(20 million t/year using 100 t trucks)

train movements

1 or more per hour.

(20 m t/year @ 4,000 t/train and returning empty)



Over time the grade of ore extracted decreases

The waste increases

The scale increases

The cost of extraction decreases with increased scale

The cost of reclamation increases



MILLBRULONG & DISTRICT
LANDCARE GROUP Inc.

CREEK STABILISATION PROJECT
1999/2000

Funded by, NSW RIVERCARE